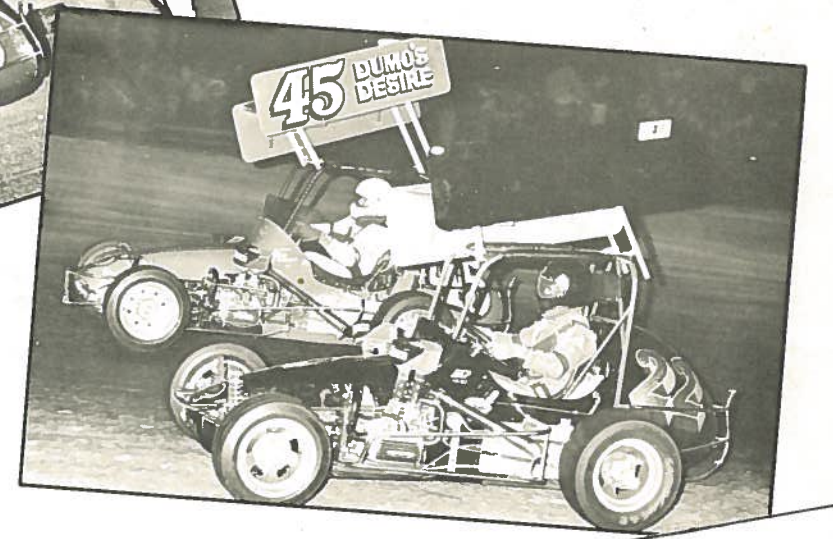
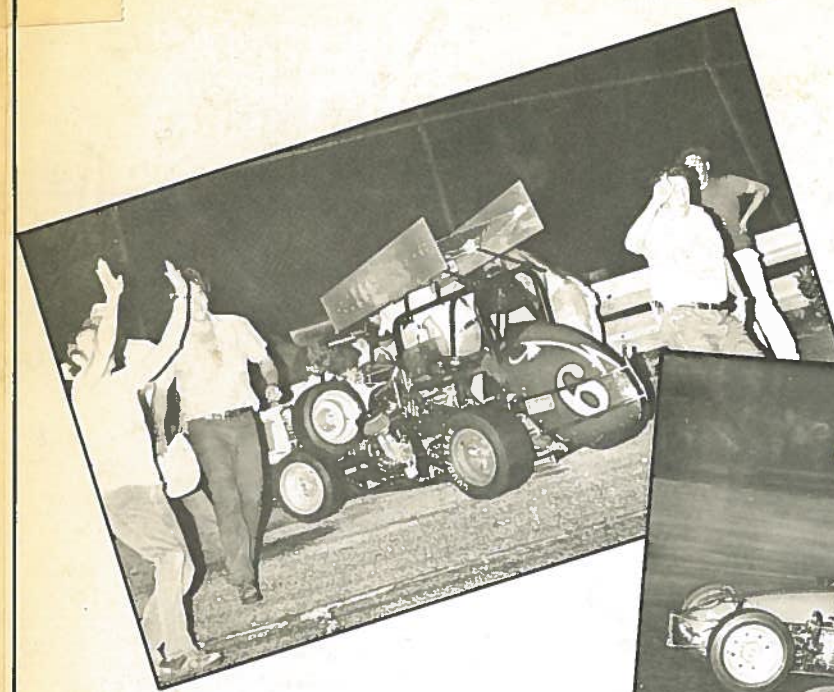
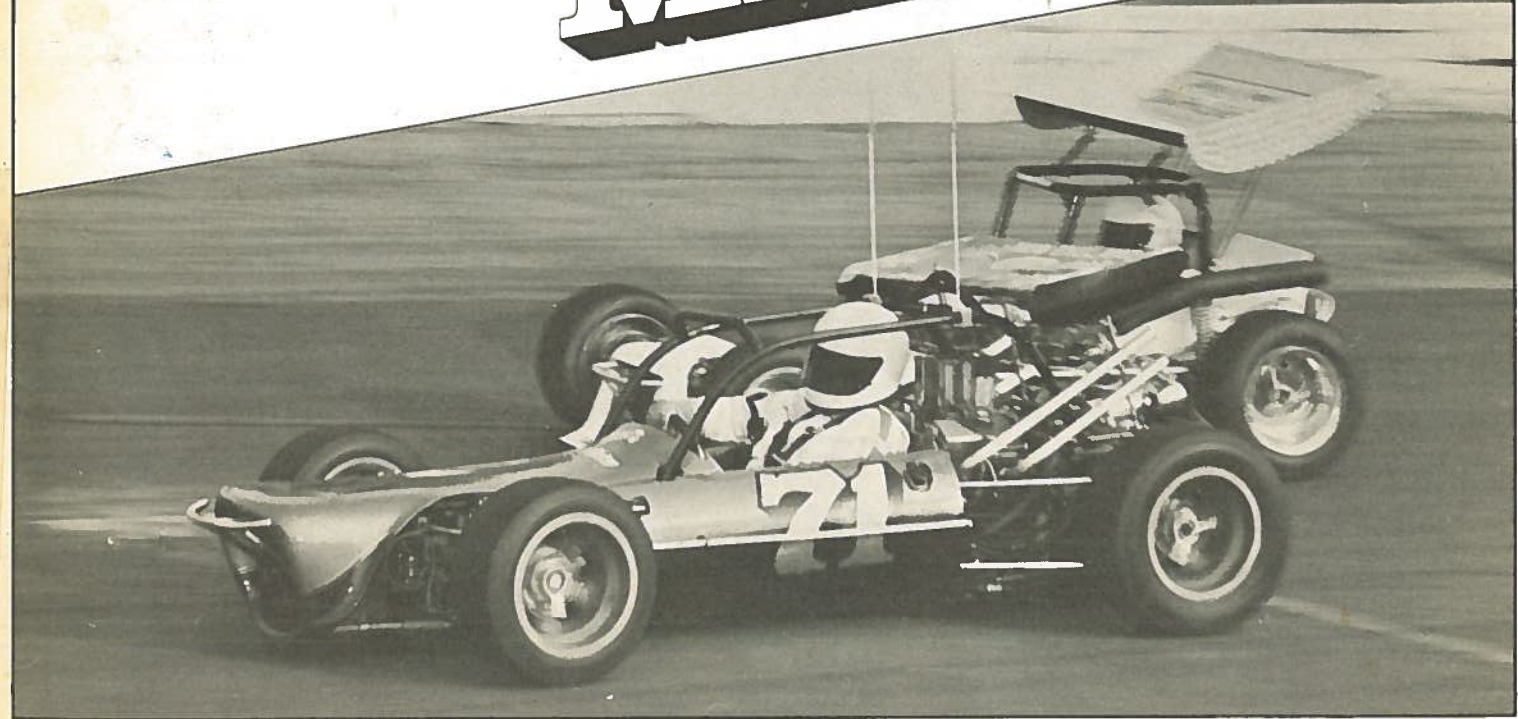


OFFICIAL PROGRAM
\$2.00



NEMA MIDGETS



LIMITED EDITION OF 1000

This program is number 75
in a Limited Edition of 1000.

Certified by: _____
Dale A. Marcy - NEMA

HENRY POVALL & SON, INC.

CLOCKS SPECIALISTS
OVER 65 YEARS

64 HARVARD STREET
BROOKLINE, MA 02164
TEL. 277-4116

55 COCHITUATE ROAD
FRAMINGHAM, MA 01701
TEL. 872-5582 - Rt. 30

COMPLIMENTS OF

K & F BUILDERS, INC.

406 JONES ROAD
FALMOUTH, MASS.

PRECISION BALANCING & ENGINEERING

1 YD ROAD • BEDFORD, MASS. 01730

Quality Service and Parts

(617) 275-8280

Ed Hovaglmian

On March 8, 1953 a meeting was held at the Thompson Speedway Clubhouse for the purpose of forming a new midget racing organization. Out of that meeting grew a success story: The Northeast Midget Association, Inc. (NEMA). The founders were dedicated racing men determined to salvage the remains of what had been the most successful spectator sport in the United States following World War II.

The first officially sanctioned NEMA race took place at the famed Seekonk Speedway, Seekonk, Mass. on May 30, 1953. The cars and drivers came from the ranks of several other racing organizations which had fallen on hard times.

The Years of 1953 and 1954 saw the fortunes of midget racing at their lowest ebb. Total purses of less than that paid to the winner of a feature race today were common place. Dedication and fortitude were indeed required during those dark days. These qualities were provided under the leadership of Milt Dentch, the first club president, car owners Ray and Wen Kelley, and John McCarthy; drivers Al Pillion and Ray Roberts; racing official Lenny Poe and many others. NEMA gradually outgrew its humble beginnings and emerged as a solid professional organization.

The early rules of NEMA prohibited the use of costly specialized racing engines. These engines were so powerful and expensive that owners with modified stock engines had little chance at the top prize money. By 1957 the stock block powered machines had developed to such an extent that this restriction was removed. Along with the improved competition with this rule change came a renewal of interest in midget auto racing among the competitors as well as the fans. NEMA has grown steadily throughout the last three decades and as it enters the 1980's it is considered to be the most innovative midget racing club in the country.

NEMA has sanctioned races in eight Northeastern states and three Canadian provinces with the most unique and exciting all racing show in the northeastern United States. There is a terrific blend of the traditional upright machines and the newer mid-engine roadster-type cars; also an excellent variety of engines including Offenhausers, 4 cylinder Chevrolets, the right half of a Chevrolet V-8 (Sesco), a Chevrolet V-8 cut to make a V-4, Ford Falcons, Pintos, and Capris, Volkswagens, and many others. There is an outstanding group of up and coming young drivers battling the established regulars for our driving honors. The show appeals to every type of race fan due to the close wheel to wheel action and the competitiveness of the cars and drivers.

NEMA is a democratic organization of people from all walks of life who become professional racers both on and off the track in their spare time and on weekends. NEMA presents a totally self contained show supplying not only cars and drivers but their own starter, track-side officials, announcer, handicapper, scorers and pit personnel.

1981 OFFICIALS

President

Frederick "Butch" Walsh
6 Center Street, Dover, MA 02030

Vice-president

James A. Lowrey
21 Davis Road, Chelmsford, MA 01824

Secretary-Treasurer

Wendell Kelley
2 Captains Lane, Hingham, MA 02043

Contest Board

Dick Bien, Milbury, MA
John McCarthy, Auburn, MA
Ray Plakstis, Great Neck, NY
Mike Scrivani, Jr., Wrentham, MA
Paul Stoehr, Bridgewater, MA
Lee Smith, Nahua, NH



DRIVERS



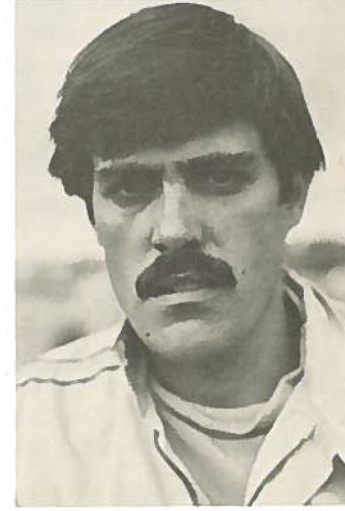
Lee Smith



Fred (Butch) Walsh



Nick Fornoro, Jr.



John Evans



Billy Mann

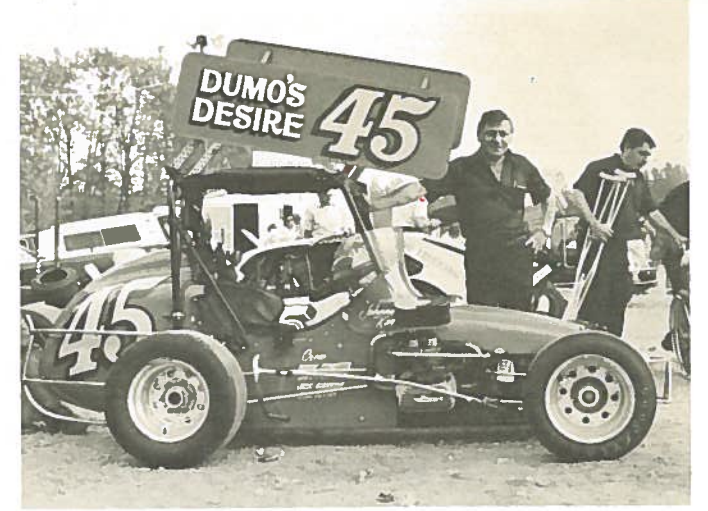


John Matrafallo
Young rookie to NEMA who's driving to the top.

DRIVERS



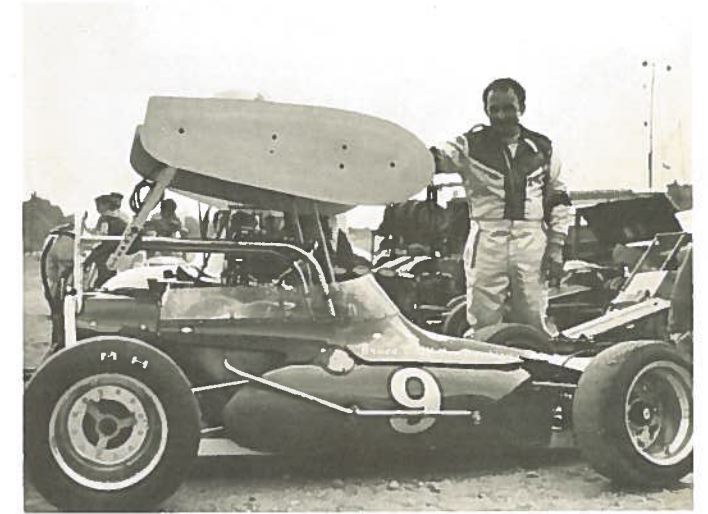
Jim Lowrey #1



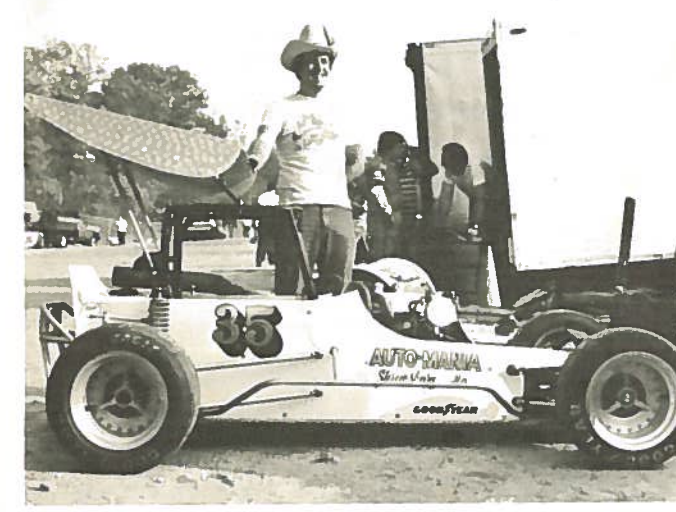
Gene Angellillo #45



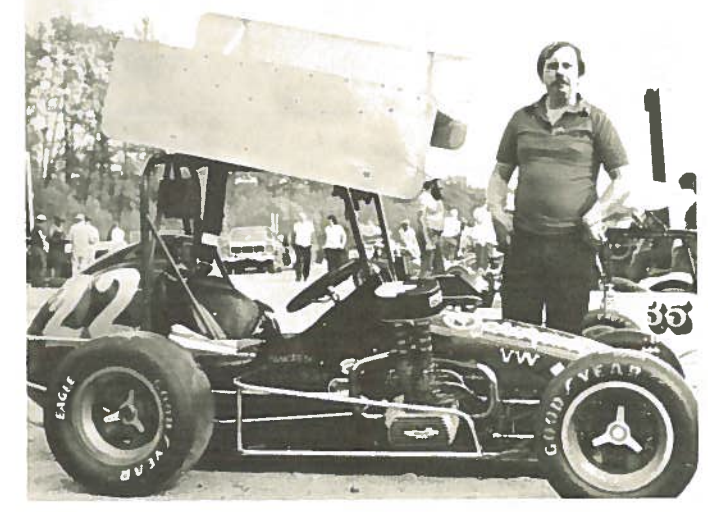
Karl Kibbe #14



Bruce Buffington #9
Owner and Driver



Dick Blen #35



Mike Scrivani, Jr., #22

THE BUSINESSMAN'S HOME AWAY FROM HOME

THE REDWOOD LODGE MOTEL

U.S. RTE. 1 — WARWICK, R.I.

Home of #61 and 86 Badger Midgets

Coffee Shop
Air Conditioned
TV and Phones

"A Cozy Spot"

Take Exit 13 off Rte. 95

Prov.—Warwick Area
Phone 739-1150



QUICK CHANGE REARS
CHANGE GEAR SETS
FRONT & REAR HUBS
DISC BRAKE PARTS



SHOCK ABSORBERS
SUSPENSION UNITS

FRAM HP FILTERS
HILBORN INJECTORS
ISKENDERIAN CAMS
JAHNS PISTONS
SAFETY EQUIPMENT
WACHO WEIGHT CHECKER



DUPONT METHANOL
VALVOLINE PRODUCTS

WE PROVIDE
COMPLETE TRACKSIDE
SERVICE. MOST PARTS,
TIRES & SAFETY
EQUIPMENT FROM
OPEN STOCK.



DEPENDABLE & COMPETITIVE
RACING TIRES
ALL SIZES & COMPOUNDS
ASPHALT & DIRT



Kelley's
RACING EQUIPMENT
KELLEY'S GARAGE, Inc.
1004 WASHINGTON ST. RT. 53
HANOVER, MA. 02339
(617) 826-3655
24 Hour Recorded Answering



MASTER CYLINDERS
CALIPERS & PUCKS
REPAIR KITS
ROTOR & DISCS



GAUGES
TACHOMETERS

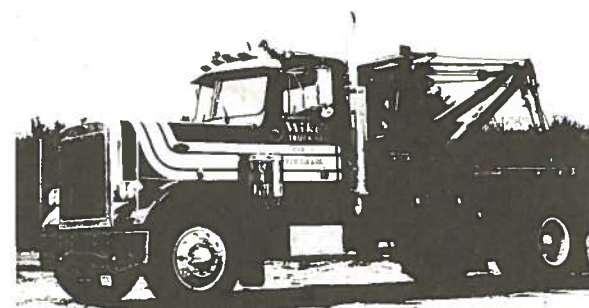
AN ALUM. FITTINGS
ARMORED BRAKE HOSES
FUEL & BRAKE
SHUT OFF VALVES
HELI-ARC WELDING
CUSTOM ALUM. TANKS

Hook-Fast.
SPECIALTIES
UNIFORM JACKETS
SHIRTS & PANTS

MANUFACTURERS OF
CAR CARRYING
TRAILERS WITH
SELF ENERGIZING BRAKES
ADJUSTABLE WHEELBASES
ADJUSTABLE RIM WIDTHS

MIKE'S TRUCK STOP

Route 1 — Wrentham, Mass



24 Hour Wrecker Service

Telephone 617/384-7596 — 617/384-3011

We Tow Anything From a VW to a Tractor Trailer

ROAD SERVICE ANYWHERE

PICK-UP AND DELIVER TIRE SERVICE

Special Rates for Fleets and Car Dealers

Home of the
No. 20, No. 21 & No. 22



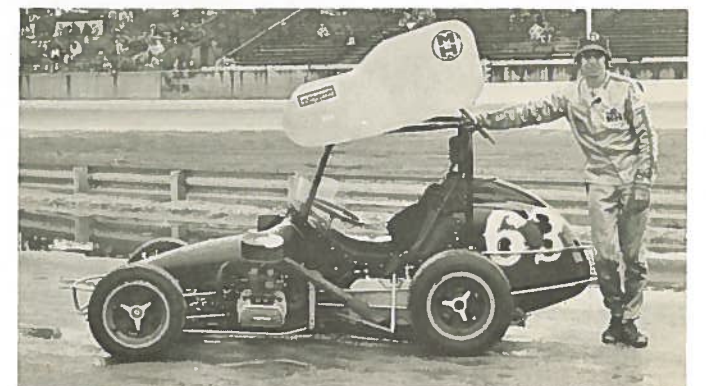
Bill Marcy - driver



Mike Favulli - #80
A new owner and driver with skill and style - a real contender.



Dale Marcy - #71
Sponsored by New England Grand Prix - Tewksbury



Bob White - #63



John Lane - #24



Sonja Elliott - #6



Everett Rogers - #86



Is this some sort of reunion?



In 1979 M&H Tires were on the winning car in 13 out of the 18 feature races that NEMA ran. The record speaks for itself. Try M&H in 1980 and put your car in the winners circle.

M&H TIRE COMPANY
RACING DIVISION

309 Main Street, Watertown, Mass. 02172 Phone (617) 924-1310

In 1980
BADGERS WON EIGHT
FEATURES and FOURTEEN
HEAT RACES.

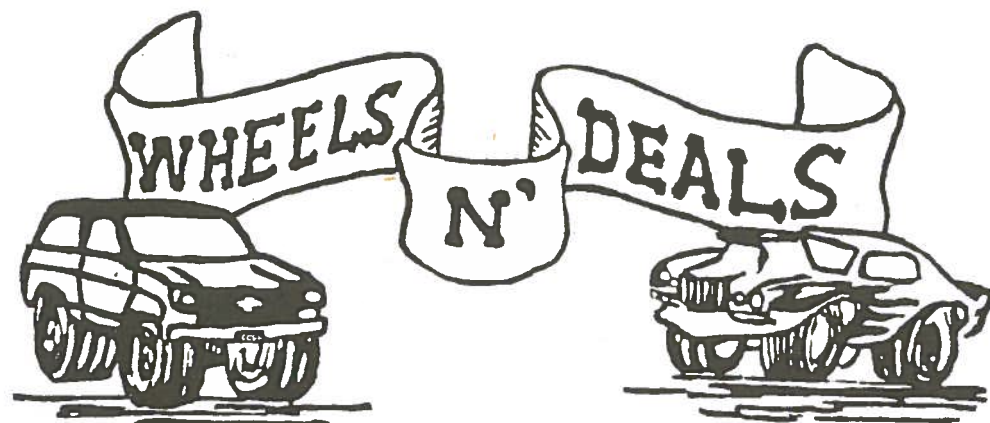
☆☆☆

Carl Kibbe's Badger
was NEMA's
Championship Car.



Telephone 617/234-8283

2194 Providence Rd. Northbridge, MA



AUTOMOTIVE PARTS
HI PERFORMANCE PRODUCTS
CUSTOM SPEED & RACING EQUIPMENT
4 WHEEL DRIVE VAN ACCESSORIES
AT ALL DISCOUNT PRICES

25 Summer Street
Chejmsford, Mass.
256-4111

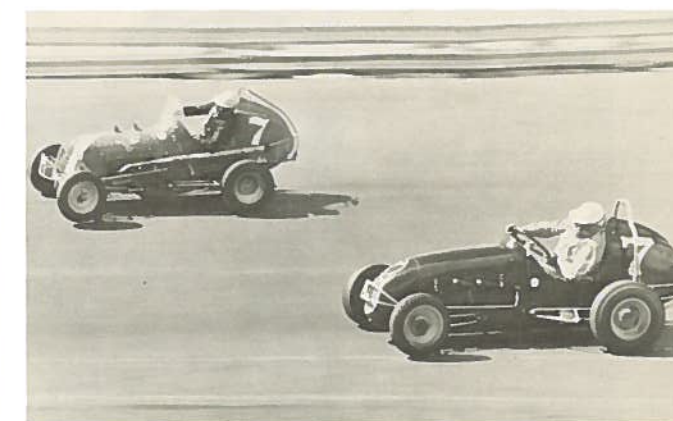
THEN AND NOW



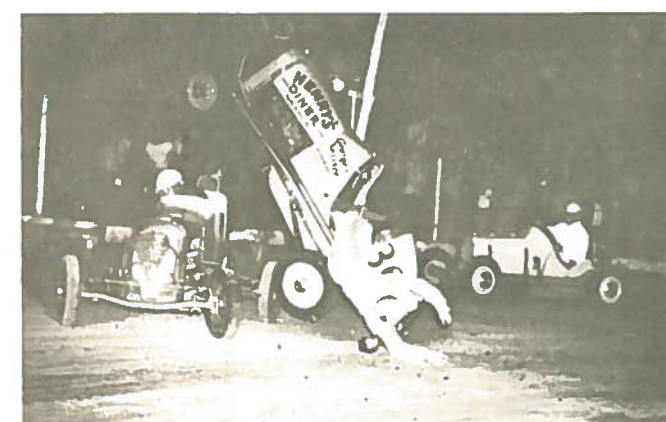
A quiet Sunday afternoon with the midgets?



Start of the Fall Thompson Classic.



Dick Gallagher passing inside.



Getting in some air time - then



...and now

A black and white portrait of a young man with short hair, wearing a dark baseball cap with a small white star on the front. He is looking directly at the camera with a slight smile. He is wearing a dark-colored shirt. The background is out of focus, showing some indistinct shapes and colors.

A black and white portrait of a man with dark, curly hair, smiling slightly. He is wearing a light-colored, possibly white, collared shirt. The background is out of focus, showing some foliage.

A black and white portrait of a middle-aged man with a mustache, smiling. He is wearing a light-colored shirt with dark horizontal stripes. The background is dark and out of focus.

A black and white portrait of a man with a mustache, wearing a jacket, looking directly at the camera. The image is a close-up, focusing on the man's face and upper torso. He has dark hair and a prominent mustache. The background is dark and indistinct. The image is framed by a white border.

Butch Yurle
Driver & Owner #3

Jim O'Brien
#16

24 HR.TOWING

10

[illegible][illegible][illegible]

(215) 646-2209